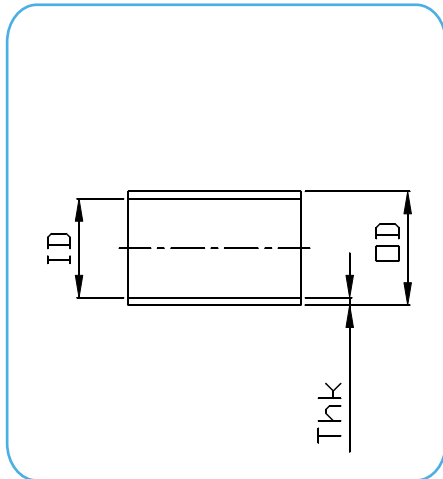


TUBE ASME BPE



**TUBE
ASME BPE**



**TUBE
ASME BPE**

Size inch	OD X Thk (mm)	ID (mm)
1/2"	12.7 x 1.65	9.4
3/4"	19.05 x 1.65	15.75
1"	25.4 x 1.65	22.1
1" 1/2	38.1 x 1.65	34.8
2"	50.8 x 1.65	47.5
2" 1/2	63.5 x 1.65	60.2
3"	76.2 x 1.65	72.9
4"	101.6 x 2.10	97.4
6"	152.4 x 2.80	146.8

Technical Information:

Sizes: according to ASME BPE (latest ed.)

Material: AISI 316L

Standard rod length: 6 meters

Internal Surface Finish: SF1 Ra<=0.5µm

Optional: SF4 Ra<=0.38µm Electropolish

DATASHEETS



Last updates can be found on our website - www.aerreinox.it
In the interests of development of the product, we reserve the right to change the specifications without prior notice